



HWE Series

Hot-Water Pressure Washers

#1 in North America for High-Pressure Cleaning Equipment

All Electric / Belt Drive

Industrial-duty **Magnetic Motor Starter** for long life of reliable starting.

Four quick-coupler **Nozzles** are made of hardened stainless steel and mounted for ready access.

Motor and pump are mounted on a **Power Platform** with four vibration isolators to minimize shaking and stress on the frame.

With the switch in the 'ON' position, the **Auto Start** function allows the unit to be turned on with the pull of the trigger for convenient remote operation.

Inlet Filter strainer protects pump from debris.

50 ft. of double-wire braid **High Pressure Hose** rated for up to 5800 PSI and with 24-inch **Hose Guard** for burst protection and swivel **Crimp Fitting** for tangle-free handling of hose and trigger gun.

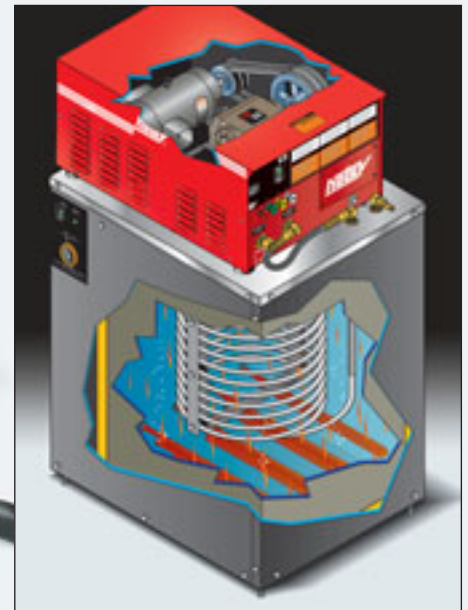
Insulated, fatigue-free **Trigger Gun** with stainless steel, dual-lance **Variable Pressure Wand** make for easy cleaning and adjusting the pressure while washing.

Heavy-duty **Upper and Lower Cabinet** is made of 10 gauge steel protected by an epoxy powder coat finish.

Safety **Low-Water Flow Switch** protects heating elements from burn out due to lack of water.

Easy-to-attach **detergent Injector** for easy soap application.

High-efficiency **Heating Elements** do not come in contact with the pressurized water, resulting in reduced scale build up, lower maintenance, and longer life.



Water is heated in a **Stainless Steel Coil** submerged in a tank of water solution for efficient heat transfer and instant hot water with the pull of the trigger; a **Layer of Oil** rests on the surface of the tank water solution for additional retention of heat and to prevent evaporation.

FEATURES

- Hotsy's only all electric, belt drive model
- Up to 3.46 GPM @ 3000 PSI
- 7 yr. Pump / 5 yr Coil Warranty
- Stainless Steel Coil



Hotsy® triplex, tri-belt drive, positive-displacement pump carries a 7-year warranty

Heating coil carries a 5-year warranty



www.Hotsy.com

Nothing Cleans Like a Hotsy!

HWE Series Hot Water Pressure Washers

- All Electric / Belt Drive
- Up to 3.46 GPM @ 3000 PSI
- 7 yr. Pump / 5 yr Coil Warranty
- Stainless Steel Coil

Designed for tough, industrial cleaning.

SPECIFICATIONS

MODEL	GPM	PSI	HP	MOTOR	AMPS	VOLT / PH	BTU / HOUR	PUMP	DRIVE	HOSE	SHIP WT (lbs)
HWE-4020C	3.9	2000	6.2	Baldor	67	460/3	184,260	Hotsy Triplex	Belt	50'	620
HWE-4020F	3.9	2000	6.2	Baldor	NR*	575/3	184,260	Hotsy Triplex	Belt	50'	620
HWE-4030C	3.46	3000	7.5	Baldor	72	460/3	184,260	Hotsy Triplex	Belt	50'	620
HWE-4030F	3.46	3000	7.5	Baldor	NR*	575/3	184,260	Hotsy Triplex	Belt	50'	620

Dimensions: 34"l x 25"w x 52"h *Not released



Clean better with Hotsy detergents

Hotsy pressure washers and parts washers clean best when matched with specially formulated Hotsy detergents. More than 40 liquids and powders meet every cleaning need imaginable. Nearly all contain Hotsy's exclusive advanced-formula HCC additives to help prevent scale build-up and to fight corrosion in your equipment. Most Hotsy detergents are USDA and Canadian Agriculture approved. All are highly concentrated, so a little goes a long way.

Spend some time with a Hotsy Expert

Hotsy has more than 130 local distributors in North America, all factory-trained to properly evaluate your high-pressure cleaning needs. Over 80% of Hotsy's distributors have been supporting Hotsy systems for more than 20 years.

This seasoned network of local service professionals will ensure you get the safest, most effective and most efficient cleaning solution to your specific cleaning need.



OPTIONS for HWE SERIES

- **E-Zee Reel Hose Reel** (100-ft.) keeps hose safely stored and out of the way.
- **Portagear Kit** allows easy movement.
- **Stainless Steel** provides extra durability.

Hotsy Accessories customize your application for top performance



High-pressure turbo nozzles



High-pressure hoses from 30 to 150-ft. lengths

Want to Know More?

Everything you've wanted to know about the entire family of Hotsy products is only a mouse-click away at www.Hotsy.com. Visit our website today to locate the Hotsy Distributor near you.



Distributed by:



Tel: (800) 525-1976 Fax: (888) 880-9631
 www.Hotsy.com email: info@Hotsy.com
 P/N 97-0609 Effective 7/06 Specifications and product descriptions subject to change without notice. ©2006 Hotsy



NOTE: We are constantly improving and updating our products. Consequently, pictures, features and specifications in this brochure may differ slightly from current models. Flow rates and pressure ratings may vary due to variances allowed by manufacturers of our machine components. We attempt to keep our machine performance within ±5% of listed specifications.

